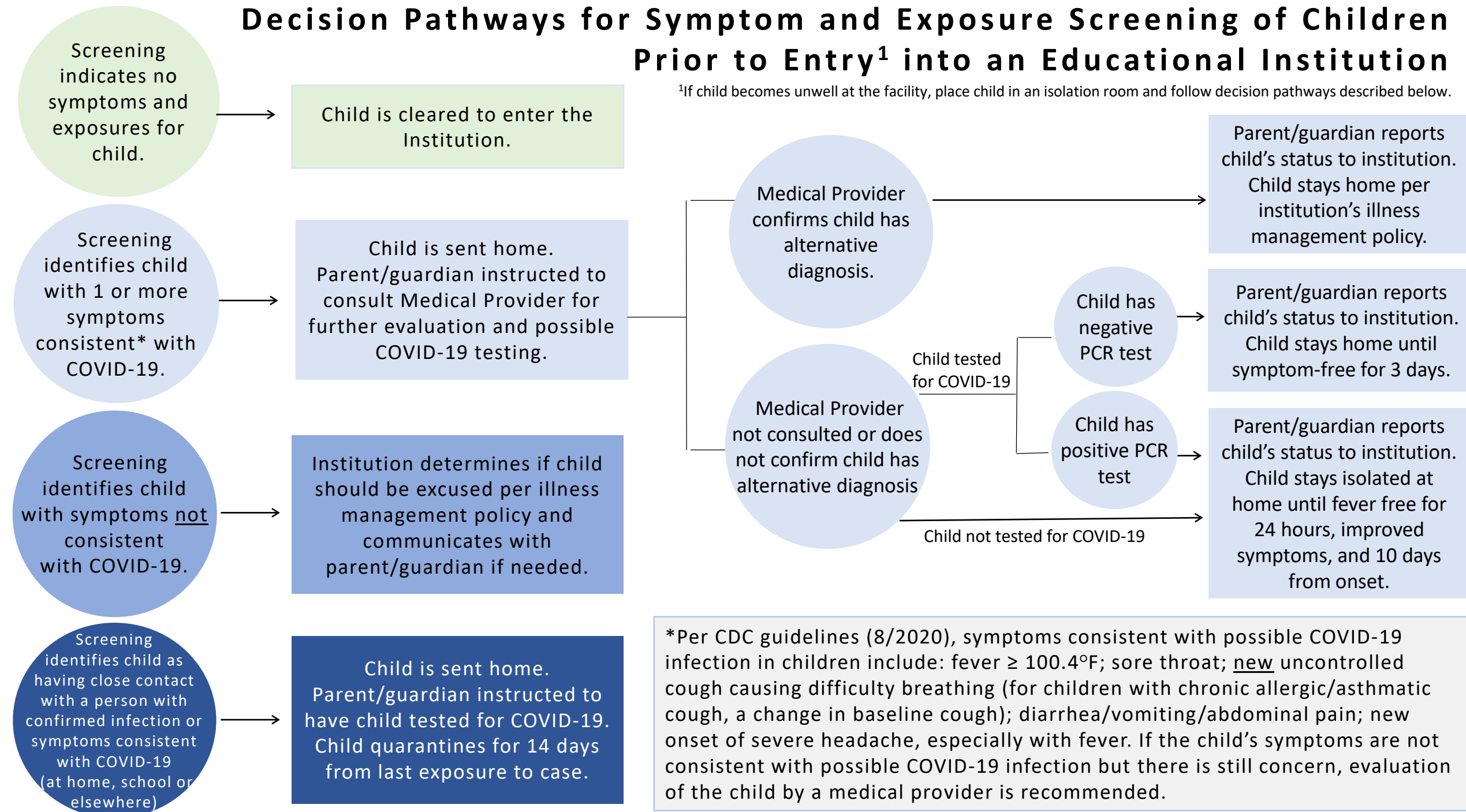


**Decision Pathways for Symptom and Exposure Screening of
Children at Tuolumne County Superintendent of School
Sites**

Decision Pathways for Symptom and Exposure Screening of Children Prior to Entry¹ into an Educational Institution

¹If child becomes unwell at the facility, place child in an isolation room and follow decision pathways described below.



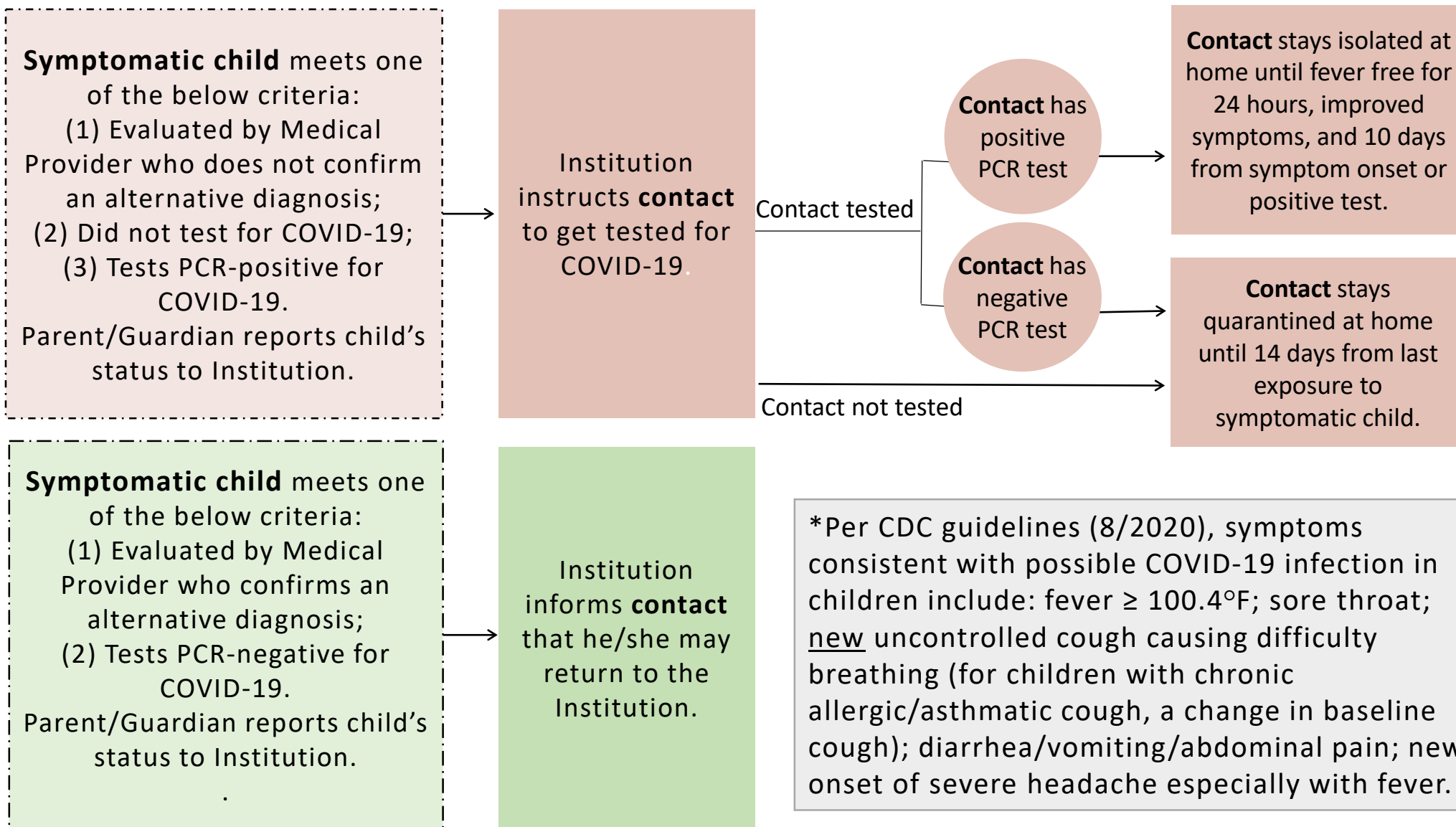
*Per CDC guidelines (8/2020), symptoms consistent with possible COVID-19 infection in children include: fever $\geq 100.4^{\circ}\text{F}$; sore throat; new uncontrolled cough causing difficulty breathing (for children with chronic allergic/asthmatic cough, a change in baseline cough); diarrhea/vomiting/abdominal pain; new onset of severe headache, especially with fever. If the child's symptoms are not consistent with possible COVID-19 infection but there is still concern, evaluation of the child by a medical provider is recommended.

Decision Pathways for Contacts¹ Who are Exposed to a Child with Symptoms Consistent* with COVID-19 at an Educational Institution

¹Contact defined as an individual at the Educational Institution that was within 6 feet of the symptomatic child for >15 minutes or had unprotected direct contact with bodily fluids/secretions from a symptomatic child.

Institution identifies **contacts** with exposure to symptomatic child at the site.

Contacts are notified and instructed to quarantine at home and wait for further instruction on quarantine length and possible COVID-19 testing.



*Per CDC guidelines (8/2020), symptoms consistent with possible COVID-19 infection in children include: fever $\geq 100.4^{\circ}\text{F}$; sore throat; new uncontrolled cough causing difficulty breathing (for children with chronic allergic/asthmatic cough, a change in baseline cough); diarrhea/vomiting/abdominal pain; new onset of severe headache especially with fever.

Decision Pathways for Persons with Laboratory-Confirmed COVID-19 and Their Contacts at Early Care and Education Centers and K-12 Schools

Guidance for Child or Staff with Laboratory-confirmed COVID-19 Infection at Educational Facility

Educational facility is notified of a child or staff with laboratory-confirmed COVID-19.

Child or Staff with laboratory-confirmed COVID-19 is sent home.

Child or Staff with laboratory-confirmed COVID-19 is instructed to isolate at home, away from others.¹

Educational facility identifies site contacts with exposure to Child or Staff with COVID-19 while infectious² and notifies contacts of exposure.

¹ Persons with laboratory-confirmed COVID-19 should isolate until fever free for 24 hours without fever reducing medication, improved symptoms, and 10 days from symptom onset (or 10 days from test date, if no symptoms).

²The infectious period for a COVID-19 case is 48 hours before symptom onset (or date of specimen collection for asymptomatic cases) until the case is no longer required to be isolated

Decision Pathway for Contacts¹ Exposed to Child or Staff with Laboratory-confirmed COVID-19 at Educational Institution.

¹Contact defined as an individual at the Educational Institution that was within 6 feet of the symptomatic child for >15 minutes or had unprotected direct contact with bodily fluids/secretions from a symptomatic child.

Institution identifies **contacts** and notifies them of exposure to laboratory-confirmed infection at the site.

Contacts are instructed to quarantine at home and test for COVID-19 infection.

